

# SIEMENS

## SINUMERIK

### MindSphere Manage MyMachines /Remote - installation in existing control environments

Application examples

#### Preface

---

Fundamental safety  
instructions

1

Introduction

2

Installation/configuration

3

Appendix

A

Valid for control:  
SINUMERIK 840D pl/ 840D sl/840DE sl

Software  
HMI Advanced, Version 6.4/7.6  
SINUMERIK Operate, Version 2.7.3.10  
Manage MyMachines /Remote, Version 01.03.00.00

**03/2020**  
A5E45211403B AC

## Legal information

### Warning notice system

This manual contains notices you have to observe in order to ensure your personal safety, as well as to prevent damage to property. The notices referring to your personal safety are highlighted in the manual by a safety alert symbol, notices referring only to property damage have no safety alert symbol. These notices shown below are graded according to the degree of danger.

 <b>DANGER</b>
---

indicates that death or severe personal injury <b>will</b> result if proper precautions are not taken.
--

 <b>WARNING</b>
--

indicates that death or severe personal injury <b>may</b> result if proper precautions are not taken.
---

 <b>CAUTION</b>
--

indicates that minor personal injury can result if proper precautions are not taken.
--

<b>NOTICE</b>
---------------

indicates that property damage can result if proper precautions are not taken.
--

If more than one degree of danger is present, the warning notice representing the highest degree of danger will be used. A notice warning of injury to persons with a safety alert symbol may also include a warning relating to property damage.

### Qualified Personnel

The product/system described in this documentation may be operated only by **personnel qualified** for the specific task in accordance with the relevant documentation, in particular its warning notices and safety instructions. Qualified personnel are those who, based on their training and experience, are capable of identifying risks and avoiding potential hazards when working with these products/systems.

### Proper use of Siemens products

Note the following:

 <b>WARNING</b>
--

Siemens products may only be used for the applications described in the catalog and in the relevant technical documentation. If products and components from other manufacturers are used, these must be recommended or approved by Siemens. Proper transport, storage, installation, assembly, commissioning, operation and maintenance are required to ensure that the products operate safely and without any problems. The permissible ambient conditions must be complied with. The information in the relevant documentation must be observed.
--

### Trademarks

All names identified by ® are registered trademarks of Siemens AG. The remaining trademarks in this publication may be trademarks whose use by third parties for their own purposes could violate the rights of the owner.

### Disclaimer of Liability

We have reviewed the contents of this publication to ensure consistency with the hardware and software described. Since variance cannot be precluded entirely, we cannot guarantee full consistency. However, the information in this publication is reviewed regularly and any necessary corrections are included in subsequent editions.

# Preface

## SINUMERIK documentation

The SINUMERIK documentation is organized into the following categories:

- General documentation/catalogs
- User documentation
- Manufacturer/service documentation

## Additional information

You can find information on the following topics at the following address (<https://support.industry.siemens.com/cs/de/en/view/108464614>):

- Ordering documentation/overview of documentation
- Additional links to download documents
- Using documentation online (find and search in manuals/information)

If you have any questions regarding the technical documentation (e.g. suggestions, corrections), please send an e-mail to the following address (<mailto:docu.motioncontrol@siemens.com>).

## mySupport/Documentation

At the following address (<https://support.industry.siemens.com/My/ww/en/documentation>), you can find information on how to create your own individual documentation based on Siemens' content, and adapt it for your own machine documentation.

## Training

At the following address (<http://www.siemens.com/sitrain>), you can find information about SITRAIN (Siemens training on products, systems and solutions for automation and drives).

## FAQs

You can find Frequently Asked Questions in the Service&Support pages under Product Support (<https://support.industry.siemens.com/cs/de/en/ps/faq>).

## SINUMERIK

You can find information about SINUMERIK at the following address (<http://www.siemens.com/sinumerik>).

## Target group

This publication is intended for:

- Project engineers
- Technologists (from machine manufacturers)
- Commissioning engineers (systems/machines)
- Programmers
- Users

## Benefits

The function manual describes the functions so that the target group knows them and can select them. It provides the target group with the information required to implement the functions.

## Standard scope

This documentation describes the functionality of the standard scope. Extensions or changes made by the machine tool manufacturer are documented by the machine tool manufacturer.

Other functions not described in this documentation might be executable in the control. This does not, however, represent an obligation to supply such functions with a new control or when servicing.

Further, for the sake of simplicity, this documentation does not contain all detailed information about all types of the product and cannot cover every conceivable case of installation, operation or maintenance.

## Note regarding the General Data Protection Regulation

Siemens respects the principles of data privacy, in particular the data minimization rules (privacy by design). For the "Manage MyMachines Remote" product, this means the following:

Information about the remote session duration and those participating.

The product processes/saves the following personal data:

This data does not involve data from the personal/private or intimate domain.

The data specified above is required to evaluate session information. The data saved is limited to the absolute minimum that is required to identify the sessions carried out and the associated participants. Further, it is information that is absolutely necessary to invoice costs between the service provider (OEM) and the end user.

The above specify data cannot be saved with anonymity as the purpose is to identify the associated operating personnel.

This session data can be deleted if necessary. To do this, contact customer support.

## Technical Support

Country-specific telephone numbers for technical support are provided in the Internet at the following address (<https://support.industry.siemens.com/sc/ww/en/sc/2090>) in the "Contact" area.



# Table of contents


	<b>Preface .....</b>	<b>3</b>
<b>1</b>	<b>Fundamental safety instructions .....</b>	<b>9</b>
1.1	General safety instructions .....	9
1.2	Warranty and liability for application examples .....	10
1.3	Security information .....	11
<b>2</b>	<b>Introduction .....</b>	<b>13</b>
2.1	Overview .....	13
2.2	System requirements .....	14
<b>3</b>	<b>Installation/configuration .....</b>	<b>19</b>
3.1	SINUMERIK control with HMI-Advanced - installing SINUMERIK Integrate .....	19
3.2	SINUMERIK control with SINUMERIK Operate - Setting the proxy .....	26
3.3	SINUMERIK Integrate client update via remote access using AMM (Linux) .....	29
3.4	SINUMERIK Integrate client update via remote access using AMM (Windows) .....	32
3.5	Installing Service Client Manage MyMachines /Remote under Windows XP .....	35
3.6	Using the Service Client Manage MyMachines /Remote under Windows XP .....	41
<b>A</b>	<b>Appendix .....</b>	<b>45</b>
A.1	List of abbreviations .....	45






# Fundamental safety instructions

## 1.1 General safety instructions

 <b>WARNING</b>
<b>Danger to life if the safety instructions and residual risks are not observed</b>
If the safety instructions and residual risks in the associated hardware documentation are not observed, accidents involving severe injuries or death can occur.
<ul style="list-style-type: none"><li>• Observe the safety instructions given in the hardware documentation.</li><li>• Consider the residual risks for the risk evaluation.</li></ul>

 <b>WARNING</b>
<b>Malfunctions of the machine as a result of incorrect or changed parameter settings</b>
As a result of incorrect or changed parameterization, machines can malfunction, which in turn can lead to injuries or death.
<ul style="list-style-type: none"><li>• Protect the parameterization against unauthorized access.</li><li>• Handle possible malfunctions by taking suitable measures, e.g. emergency stop or emergency off.</li></ul>

## **1.2 Warranty and liability for application examples**

Application examples are not binding and do not claim to be complete regarding configuration, equipment or any eventuality which may arise. Application examples do not represent specific customer solutions, but are only intended to provide support for typical tasks.

As the user you yourself are responsible for ensuring that the products described are operated correctly. Application examples do not relieve you of your responsibility for safe handling when using, installing, operating and maintaining the equipment.

## 1.3 Security information

Siemens provides products and solutions with industrial security functions that support the secure operation of plants, systems, machines and networks.

In order to protect plants, systems, machines and networks against cyber threats, it is necessary to implement – and continuously maintain – a holistic, state-of-the-art industrial security concept. Siemens' products and solutions constitute one element of such a concept.

Customers are responsible for preventing unauthorized access to their plants, systems, machines and networks. Such systems, machines and components should only be connected to an enterprise network or the internet if and to the extent such a connection is necessary and only when appropriate security measures (e.g. firewalls and/or network segmentation) are in place.

For additional information on industrial security measures that may be implemented, please visit

<https://www.siemens.com/industrialsecurity> (<https://www.siemens.com/industrialsecurity>).

Siemens' products and solutions undergo continuous development to make them more secure. Siemens strongly recommends that product updates are applied as soon as they are available and that the latest product versions are used. Use of product versions that are no longer supported, and failure to apply the latest updates may increase customer's exposure to cyber threats.

To stay informed about product updates, subscribe to the Siemens Industrial Security RSS Feed under

<https://www.siemens.com/industrialsecurity> (<https://new.siemens.com/global/en/products/services/cert.html#Subscriptions>).

Further information is provided on the Internet:

Industrial Security Configuration Manual (<https://support.industry.siemens.com/cs/ww/en/view/108862708>)

### WARNING

#### Unsafe operating states resulting from software manipulation

Software manipulations, e.g. viruses, Trojans, or worms, can cause unsafe operating states in your system that may lead to death, serious injury, and property damage.

- Keep the software up to date.
- Incorporate the automation and drive components into a holistic, state-of-the-art industrial security concept for the installation or machine.
- Make sure that you include all installed products into the holistic industrial security concept.
- Protect files stored on exchangeable storage media from malicious software by with suitable protection measures, e.g. virus scanners.
- On completion of commissioning, check all security-related settings.
- Protect the drive against unauthorized changes by activating the "Know-how protection" converter function.



## Introduction

### 2.1 Overview

This document provides information about how to connect SINUMERIK Powerline controls with the HMI Advanced and SINUMERIK Operate operating software with the "Manage MyMachines /Remote" application.

The description below refers to the components listed in following Chapter: System requirements (Page 14).

## 2.2 System requirements

If you want to connect "Manage MyMachines /Remote" to an existing control environment, the following requirements must be met.

### Precondition

To connect to MindSphere, you need a current version of the SINUMERIK Integrate client - and the service client for Manage MyMachines /Remote. Install and configure the client subsequently.

#### Note

##### Windows XP

Windows XP and older versions of Windows do not support the TLS1.2 encryption protocol for secure data transmission that is necessary for a connection to MindSphere.

### Operating software and hardware

The following procedure is provided with the following components by way of example:

Table 2-1 SINUMERIK 840D pl

Operating software version	SINUMERIK Integrate Client software version	Hardware version	Operating system
HMI-Advanced <sup>*)</sup> <sup>***)</sup> V06.04 V07.06	04.12.00.21 04.13.00.36	PCU 50.3B	WinXP SP3
SINUMERIK Operate <sup>*)</sup> <sup>***)</sup> V02.07.03.10			
FANUC 31i <sup>**)</sup>			Windows 7 Standard Embedded

<sup>\*)</sup> The connection does not comply with security-related requirements. Although the functionality is guaranteed, it is not part of the product release. You must implement additional security measures for which you are responsible.

<sup>\*\*)</sup> The additional driver "FANUCdriver 1.0" is required for the SINUMERIK Integrate client. Although the functionality is guaranteed, it is not part of the product release. The connection is only possible via the IPC client running on the IPC, and not via the SINUMERIK Integrate client integrated in SINUMERIK Operate.

<sup>\*\*\*)</sup> Only PCU

#### Note

##### SINUMERIK Integrate applications

Parallel operation with SINUMERIK Integrate applications is not possible.

**Industrial PC / 3rd party controller**

Processor	1 GHz processor
RAM (GB)	4
Free hard disk capacity (GB)	1
Operating systems	Windows 7 SP1 (x64) Professional/Enterprise/Ultimate Windows 7 Standard Embedded Windows 10 (x64) Pro/Enterprise
Screen resolution	At least 1980 x 1080

**Note****Only one VNC connection possible**

Only one VNC viewer connection to the SINUMERIK control system is permissible.

**Security instructions****NOTICE****Security standards for SINUMERIK controls connected to MindSphere**

The connection of SINUMERIK controls to MindSphere via TLS 1.2 /https meets the highest security standards.

SINUMERIK versions that do not meet these standards are not part of the product. For these versions, additional security measures must be taken.

You are responsible for preventing unauthorized access to your plants, systems, machines, and networks. Systems, machines and components should only be connected to the company's network or the Internet if and to the extent necessary and with appropriate security measures (e.g. use of firewalls and network segmentation) in place.

**NOTICE****Data misuse due to insecure Internet connection**

An unrestricted Internet connection can lead to data misuse.

Before establishing a network connection, ensure that your PC is exclusively connected to the Internet via a secure connection. Pay attention to the information relevant to security.

You will find further information about communication security in the Configuration Manual: Industry Security (<https://support.industry.siemens.com/cs/ww/de/view/108862708>).

---

**Note**

**Making the operator PC secure (service engineering side)**

The necessary security measures (e.g. virus scanner, firewalls, OS patching, etc.) must be implemented on the PCs that are used for visualization and configuration of Manage MyMachines /Remote with the machine operator or end customer.

Further information about PCs in the industrial environment can be found in the Configuration Manual: Industry Security (<https://support.industry.siemens.com/cs/ww/de/view/108862708>).

---

**Note**

**Making the SINUMERIK control secure (machine operator side)**

The necessary security measures (e.g. virus scanner, firewalls, operating system patching, etc.) must be implemented on the SINUMERIK controls.

You will find further information about communication security in the Configuration Manual: Industry Security (<https://support.industry.siemens.com/cs/ww/de/view/108862708>).

---

**NOTICE**

**Misuse of data**

It is essential to use secure data storage for saving your data, particularly confidential data. Store this data encrypted, either locally or on the network. Make sure that this data cannot be accessed by unauthorized personnel.

This applies to the following data:

- Archive files
- Image files
- Project files
- Trace files
- Safety-related data

You will find further information about secure data storage in the Configuration Manual: Industry Security (<https://support.industry.siemens.com/cs/ww/de/view/108862708>).

**NOTICE**

**Data manipulation possible**

There is a risk that an attacker inside the network could gain access to the operator PC. There, the hacker can read or manipulate various system components (e.g. the content of databases). In this way, the attacker can change tool data, NC programs, machine archives, or the system structure itself, for example. Manage MyMachines /Remote cannot prevent this type of attack.

- As the person responsible for the machine network, take measures to ensure the industrial security of the production/machine network.

Siemens AG accepts no liability for this!



**Note****Saving the acquired data**

The "Manage MyMachines Remote" product was developed by Siemens, taking the "privacy by design" principle into account. This means that it is up to the service provider (OEM) to decide how long the acquired data, such as information about the time period and participation in remote sessions, will be stored.

---

**Delivery form**

The SINUMERIK Integrate client, the service client for Manage MyMachines /Remote as well as the latest updates and further information on the applications and products are stored on PridaNet and can be downloaded directly from there.

- OR -

You can contact your machine manufacturer.

- OR -

You can contact the Siemens Service&Support.

**Additional references**

- Further information on the "SINUMERIK Operate" operating software can be found in the following reference:  
SINUMERIK Operate Commissioning Manual (IM9)
- For further information on "SINUMERIK Integrate", please refer to:  
SINUMERIK Integrate MMP, MMT, AMC, AMP, AMM/E, AMD Commissioning Manual

Additional information regarding MindSphere applications is available at the following links:

MindSphere (<https://support.industry.siemens.com/cs/de/en/view/109742256>)

MindSphere documentation (<https://documentation.mindsphere.io/index.html#/kiosk/de>)

**Additional information**

When connecting SINUMERIK controls that are not of the current generation, special attention must be paid to security requirements.

The security requirements of MindSphere according to the state of the art must be considered for such controls and ensured with further measures and network components within the local IT environment.

- It must be ensured that the communication between the factory network and MindSphere meets the current security standards, e.g. TLS 1.2.
- It must be ensured that unauthorized access to the control in the company network / factory network environment and attacks on the firewall in front of the control are not possible.
- It must be ensured that communication inside the factory network environment cannot be attacked.

The guidelines of the customer's IT department must be followed.

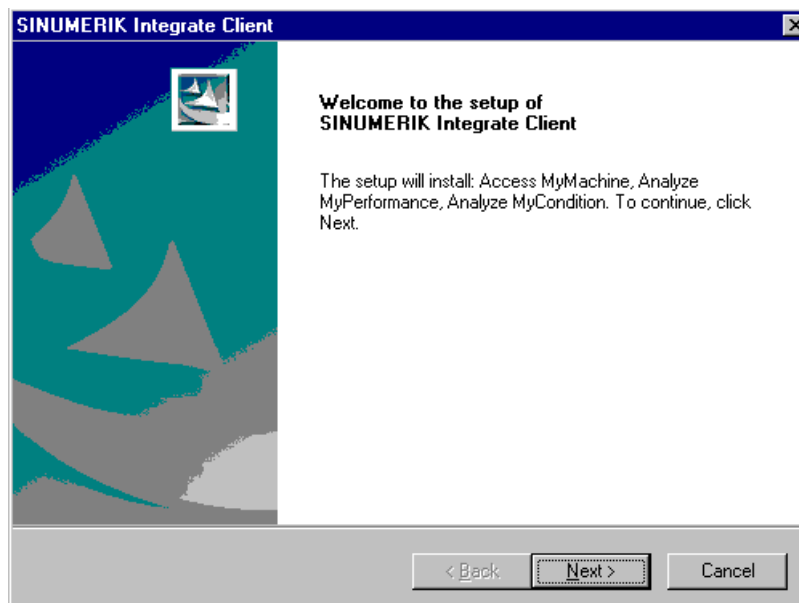


## Installation/configuration

### 3.1 SINUMERIK control with HMI-Advanced - installing SINUMERIK Integrate

#### Procedure

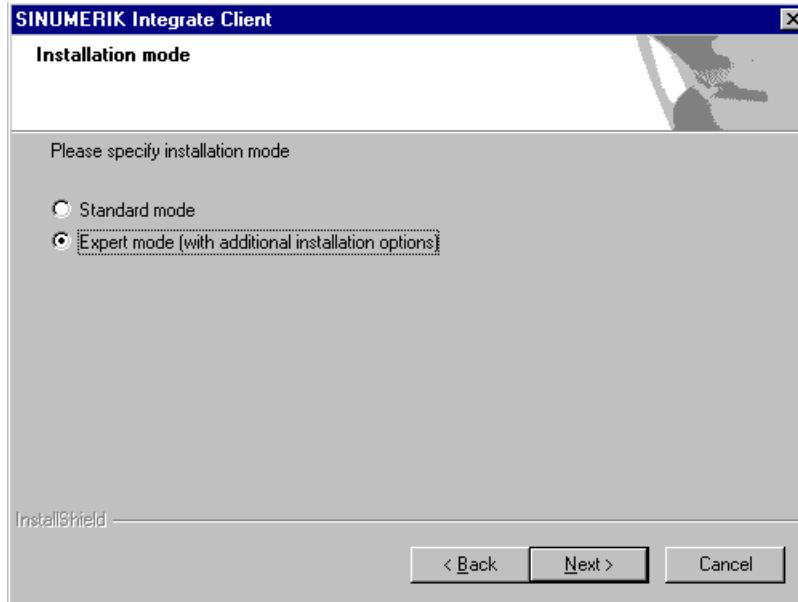
1. Start the SINUMERIK control system in Windows service mode.
2. Open the installation directory.
3. Start the "setup.exe" setup file by double-clicking.
  - If you have not installed the appropriate Internet Explorer, a message will appear indicating this, for example, "The program requires Internet Explorer 6 or higher". Installation is canceled and you must install the appropriate Internet Explorer first. Then restart the client installation.
4. The welcome dialog box opens.  
The installation language is English.  
Click on the "Next >" button to prepare for the installation.



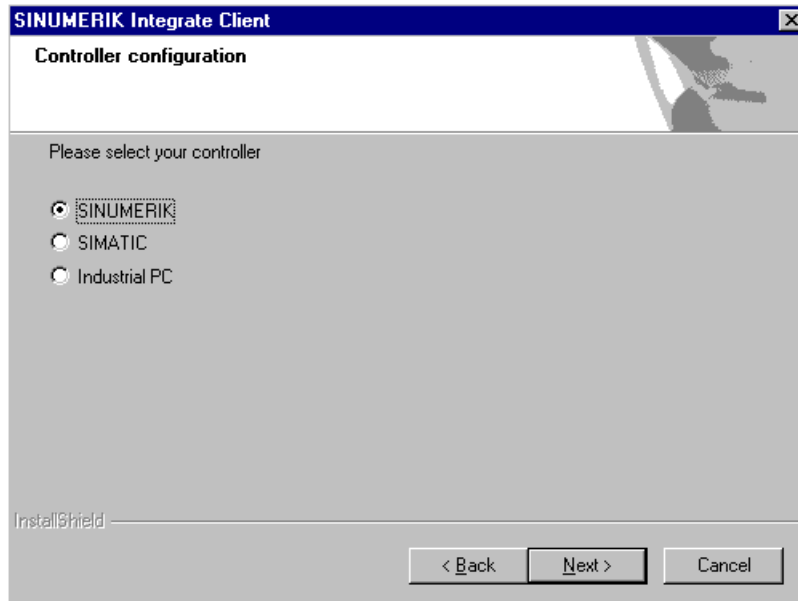
5. The "License Agreement" window opens.  
Read the license agreement.
  - Click "Print" if you want to print out the terms.
  - Then select the "I accept the terms of the license agreement" check box and click "Next >".
  - OR –
  - Click "< Back" to return to the previous window.

3.1 SINUMERIK control with HMI-Advanced - installing SINUMERIK Integrate

- 6. The "Installation mode" window opens.
  - Select the option button "Expert mode (with additional installation options)."
  - Click "Next >".

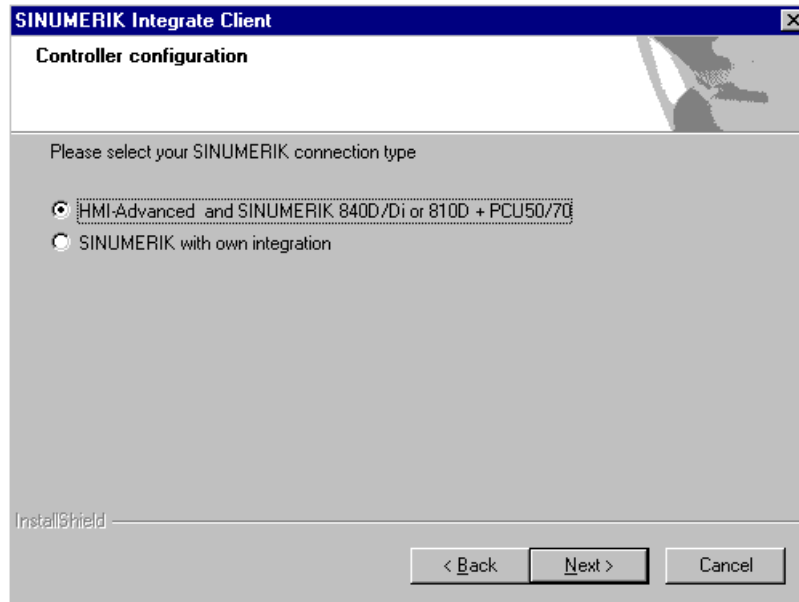


- 7. The "Controller configuration" window opens. Select your controller.
  - Select, for example, the "SINUMERIK" option button.
  - Click "Next >".

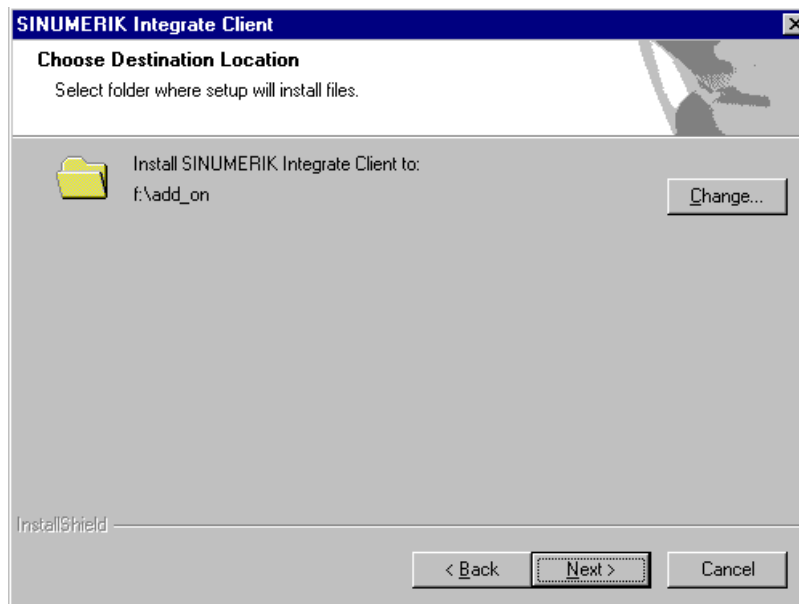


## 3.1 SINUMERIK control with HMI-Advanced - installing SINUMERIK Integrate

8. Now select the SINUMERIK connection type in the "Controller configuration" window.
  - Select the option button "HMI-Advanced and SINUMERIK 840D/Di or 810D + PCU50/70".
  - Click "Next >".

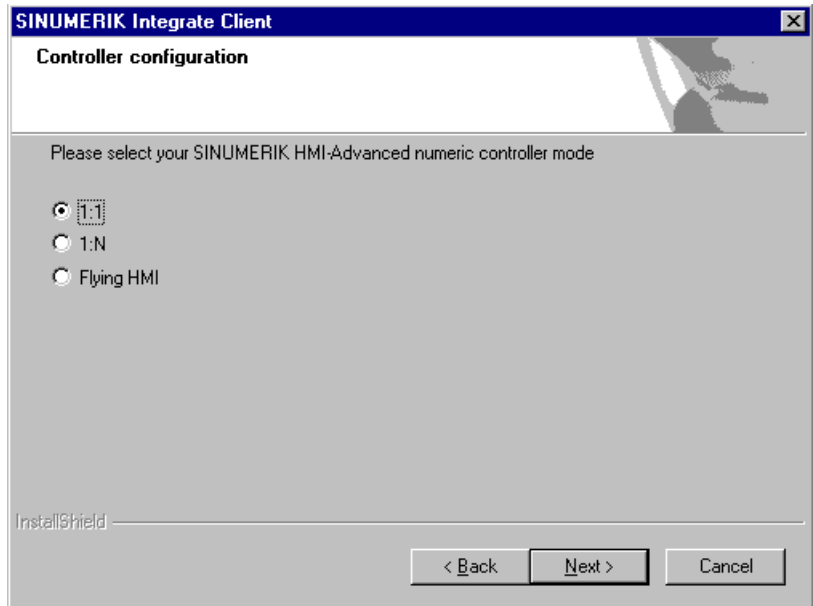


9. The "Choose Destination Location" window opens and the installation directory is displayed.
  - Click "Next >".
  - OR -
  - Click "Change..." to change the directory.

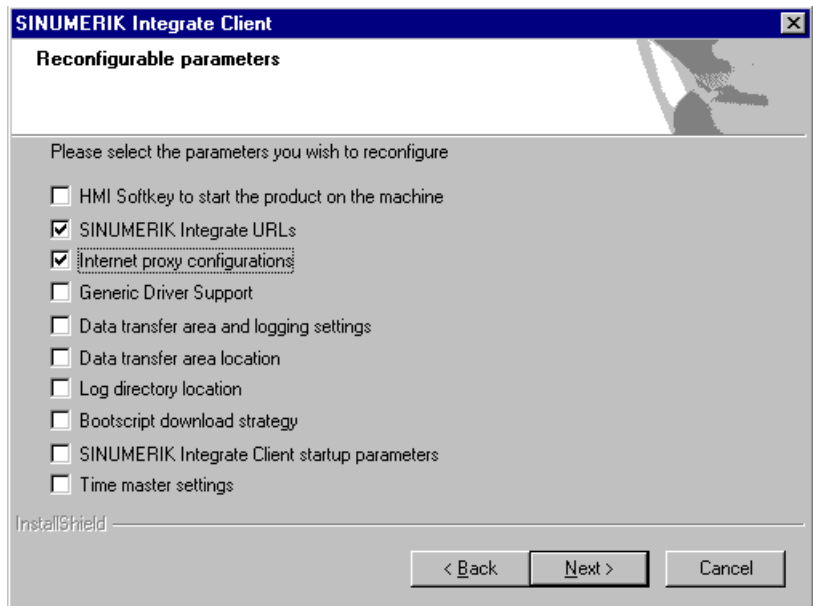


3.1 SINUMERIK control with HMI-Advanced - installing SINUMERIK Integrate

- 10. The "Controller configuration" window opens.
  - Select the option button for connection "1:1".
  - Then click "Next >".

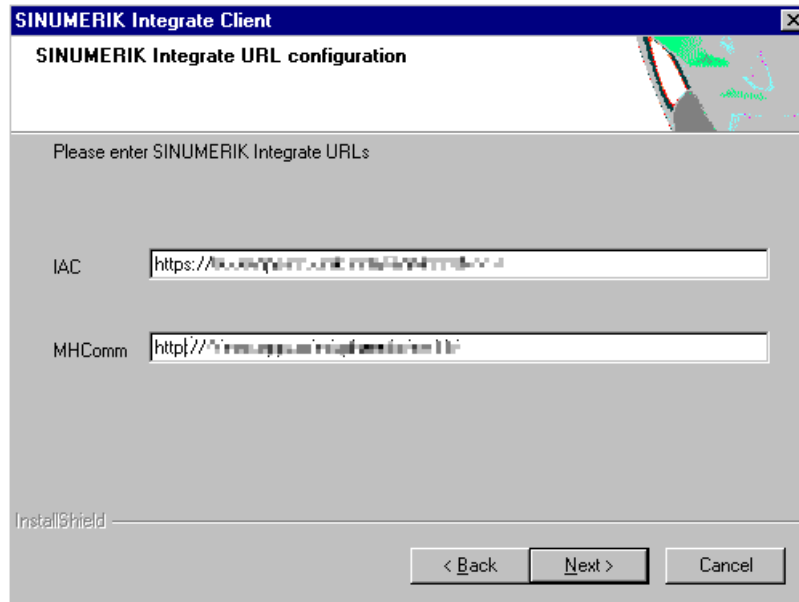


- 11. The "Reconfigurable parameters" window opens.
  - Select the "SINUMERIK Integrate URLs" and "Internet proxy configurations" check boxes.
  - Click "Next >".

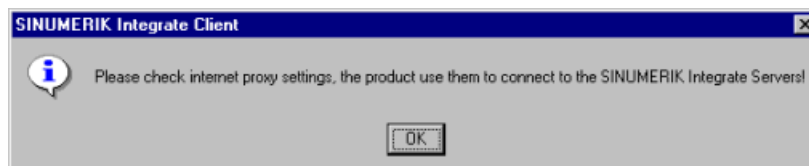


## 3.1 SINUMERIK control with HMI-Advanced - installing SINUMERIK Integrate

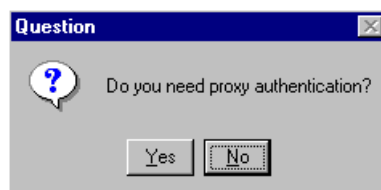
12. The "SINUMERIK Integrate URL configuration" window opens.  
The proxy server is required to connect the control to MindSphere.
- Enter the following WebService URL for the MindSphere V3 Livesystem in the "MHComm" text box:  
`https://gateway.eu1.mindsphere.io/api/agentcom-mmmops/v3/ws11`
  - Click "Next >".



13. The following message is displayed: "Please check internet proxy settings, the product use them to connect to the SINUMERIK Integrate Servers!"
- Click "OK" to adapt the proxy server.



14. The "Question" window opens with the following question: "Do you need proxy authentication?"
- If authentication is required for the proxy, click "Yes".

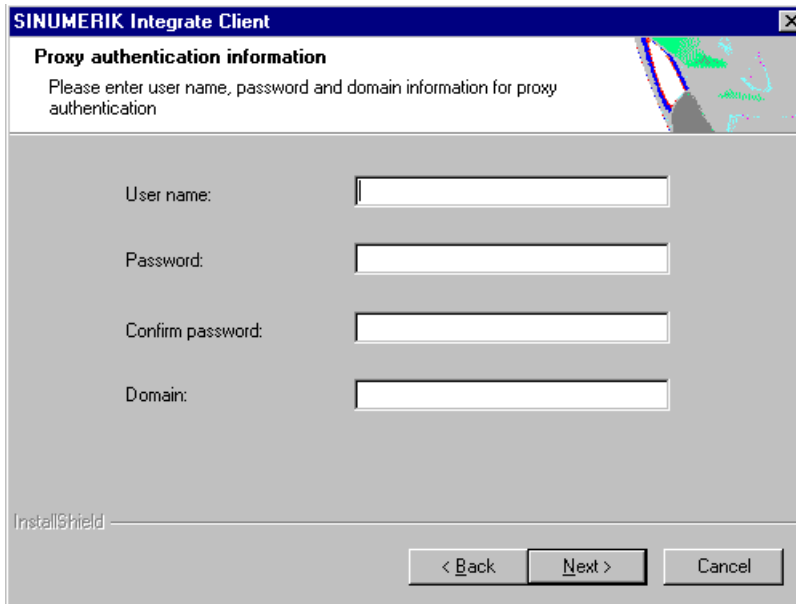


3.1 SINUMERIK control with HMI-Advanced - installing SINUMERIK Integrate

15. The "SINUMERIK authentication information" window opens.

Enter the data in the text boxes:

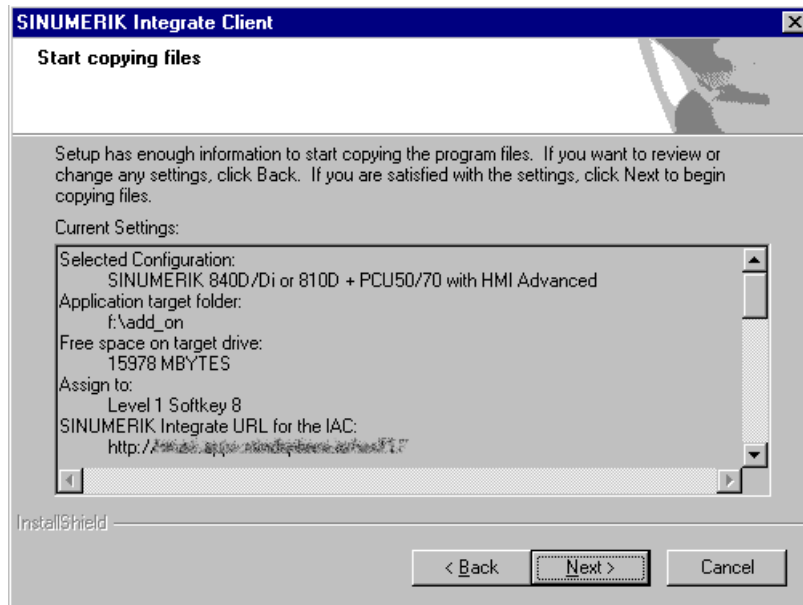
- User name:
- Password:
- Confirm password:
- Domain:
- Click "Next >".





16. The "Start copying files" window opens and the settings made are displayed.

- Click "Next >" to copy the data to the SINUMERIK control.



17. You are prompted to restart the system after the installation has been completed. To do this, click "OK".

## 3.2 SINUMERIK control with SINUMERIK Operate - Setting the proxy

The SINUMERIK Operate operating software is delivered together with the SINUMERIK Integrate Client software.

An update is not possible.

---

### Note

#### Transferring SINUMERIK data on the MindSphere platform

The following steps allow you to transfer the SINUMERIK data to the MindSphere platform.

By performing the steps described below, Processes in which software scripts are loaded to the SINUMERIK control are performed automatically, especially by input and confirmation of the web service URL.

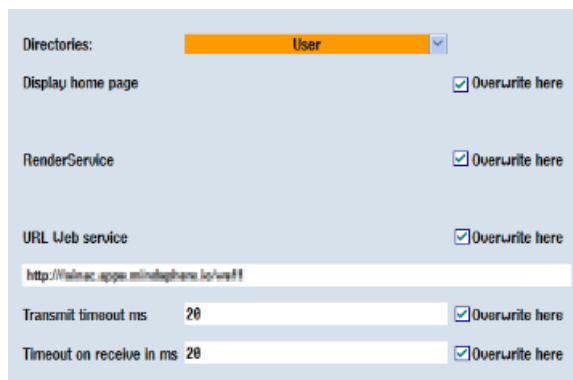
---

### Requirement

SINUMERIK Integrate has been enabled for usage.

## Procedure

1. The "Settings" window is open.  
Press the "URLs>" softkey.
2. Press the "Edit" softkey and select the following settings:
  - Directory: Select the "User" entry in the "Directory" drop-down list.
  - Display home page: Select the "Overwrite here" check box.
  - RenderService: Select the "Overwrite here" check box.
  - URL web service: Select the "Overwrite here" check box.
  - Enter the following WebService URL, for example, for the MindSphere V3 Livesystem: <https://gateway.eu1.mindsphere.io/api/agentcom-mmmops/v3/ws11>
  - Enter the required value in the "Transmit timeout ms" text box (default value is 200). For MindSphere, a value of "20" is recommended, and select the "Overwrite here" check box.
  - Enter the required value in the "Timeout on receive in ms" text box (default value is 200). For MindSphere, a value of "20" is recommended, and select the "Overwrite here" check box.



The screenshot shows a settings window with the following fields and options:

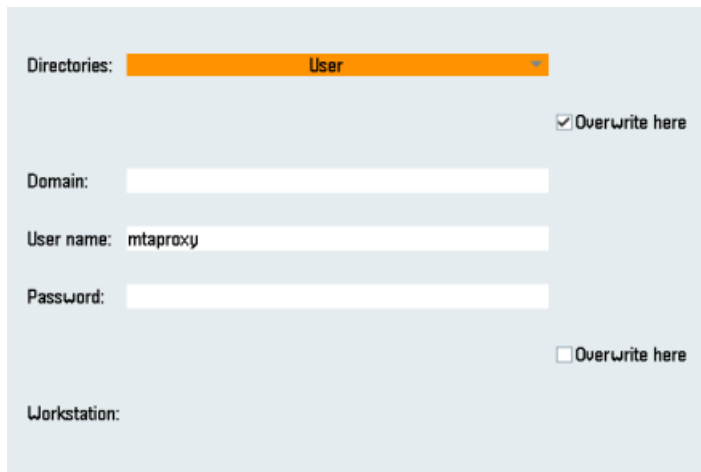
- Directories: User (selected in a dropdown menu)
- Display home page:  Overwrite here
- RenderService:  Overwrite here
- URL Web service:  Overwrite here  
http://wainac.app.mindsphere.io/wa11
- Transmit timeout ms: 20  Overwrite here
- Timeout on receive in ms: 20  Overwrite here

3. Press "OK".  
A syntax check is performed and the access data is saved.
4. To establish a connection from the customer network, you must adapt the proxy settings.
  - Press the "Proxys>" softkey.  
The stored settings are displayed.

- 5. Press the "Edit" softkey and select the following settings:
  - Select the "Use fix proxy" check box.
  - Enter your proxies in the "Proxy 1" to "Proxy 3" text boxes.
  - Select the "Overwrite here" check box even if you only enter one proxy, to apply the new entry.
  - Press the "OK" softkey to save the settings.



- 6. If an authentication is required for the proxy, press the "Authorization" softkey.
  - Select the "Overwrite here" check box to apply the new entry.
  - Enter the user data in the "Domain", "User name" and "Password" text boxes.
  - Press the "OK" softkey to save the settings.



- 7. Restart the control so that the access data can take effect.

### 3.3 SINUMERIK Integrate client update via remote access using AMM (Linux)

The following steps are required to migrate from the "Access MyMachines/Ethernet" product to the "Manage MyMachines /Remote" product.

1. Delete the existing SINUMERIK Integrate client
2. Transfer the new SINUMERIK Integrate client
3. Power up the SINUMERIK control system

#### Software versions

In this example, the SINUMERIK Integrate client with software release V4.7 SP2 HF4 was updated to V03.00.06.

This procedure can be applied for the following software releases:

- Software line V4.5 from software release V4.5 SP6 (client higher than V02.00.06)
- Software line V4.7 from software release V4.7 SP2 HF1 (client higher than V03.00.06)

Other software releases can also be updated using the same procedure. However, it cannot be guaranteed that the procedure can be applied for every configuration within the system requirements.

#### Precondition

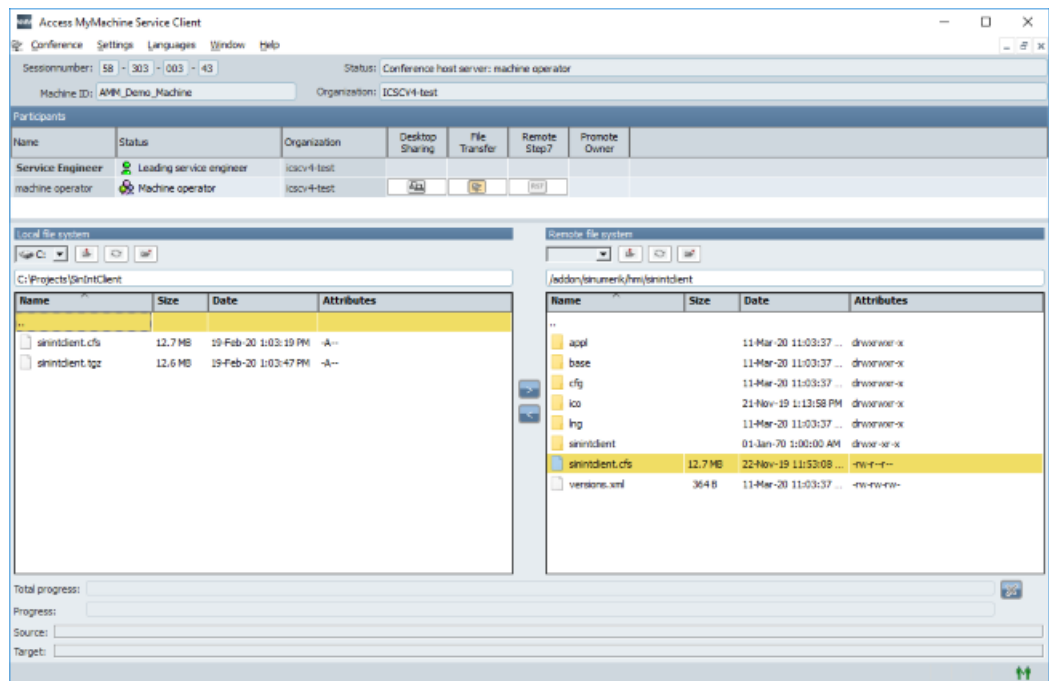
- The system time of the SINUMERIK control system indicates the current date.
- SINUMERIK Integrate Package V4.1 SP5
- Users are familiar with the functionality and operation of AMM/Ethernet and its file transfer functionality.
- A connection to the target system was established using AMM/Ethernet.
- File transfer is activated, and all machine operator approvals to transfer a file are available.

#### Delete the existing SINUMERIK Integrate client

In order that the SINUMERIK Integrate client can be replaced, file "sinintclient.cfs" must be deleted on the SINUMERIK control system.

1. In the removed file system, navigate in the target directory to the CF card: /addon/sinumerik/hmi/sinintclient.
2. Select file "sinintclient.cfs".

3. Delete the file.
4. Answer "Yes" to the confirmation prompt.



### Transfer the new SINUMERIK Integrate client

The SINUMERIK Integrate client from the SINUMERIK Integrate package is directly copied to the target directory on the SINUMERIK control system.

1. In the local file system, navigate to the source directory, e.g.:  
SINUMERIK\_Integrate\_package\_V04.01.05.00/SinIntClient/Operate/4.7.x/Linux/.
2. Select file "sinintclient.cfs".
3. In the removed file system, navigate in the target directory to the CF card: /addon/sinumerik/hmi/sinintclient.
4. Click on button ">", to transfer the file to the SINUMERIK control system.  
No other actions can be performed while the file is being copied. The operation is displayed on a progress indicator.

### Activating the SINUMERIK Integrate client

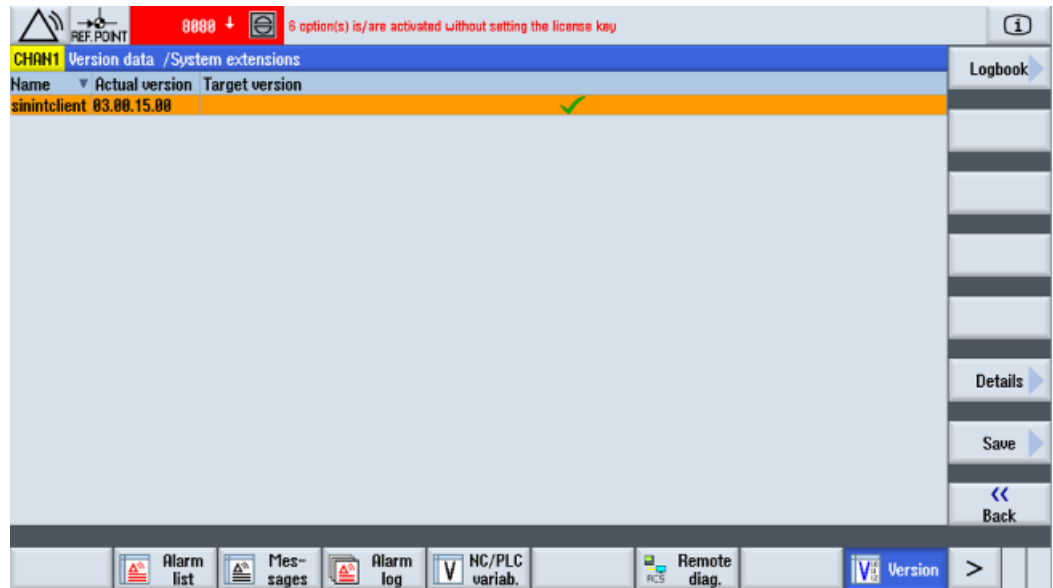
1. Exit the remote access at the SINUMERIK control system.
2. Perform a power on.

#### Note

It is not sufficient to just restart the HMI!

## 3.3 SINUMERIK Integrate client update via remote access using AMM (Linux)

3. Re-enter the remote session.
4. Open operating area Diagnostics.  
Check the SINUMERIK Integrate client version under "/Version/System extensions".



- OR -

Check the SINUMERIK Integrate client version in the CF card file system.  
Open file "version.xml" in directory: /addon/sinumerik/hmi/sinintclient.

## 3.4 SINUMERIK Integrate client update via remote access using AMM (Windows)

The following steps are required to migrate from the "Access MyMachines/Ethernet" product to the "Manage MyMachines /Remote" product.

1. Transfer the new SINUMERIK Integrate client
2. Update client and power on the SINUMERIK control system

### Software versions

In this example, the SINUMERIK Integrate client with software release V4.7 SP2 HF4 was updated to V03.00.15.

This procedure can be applied for the following software releases:

- Software line V4.5 from software release V4.5 SP6 (client higher than V02.00.06)
- Software line V4.7 from software release V4.7 SP2 HF1 (client higher than V03.00.06)

Other software releases can also be updated using the same procedure. However, it cannot be guaranteed that the procedure can be applied for every configuration within the system requirements.

### Precondition

- The system time of the SINUMERIK control system indicates the current date.
- SINUMERIK Integrate Package V4.1 SP5
- Users are familiar with the functionality and operation of AMM/Ethernet and its file transfer functionality.
- A connection to the target system was established using AMM/Ethernet.
- File transfer is activated, and all machine operator approvals to transfer a file are available.
- Access rights for the target directory: Read / write / execute

### Transfer the new SINUMERIK Integrate client

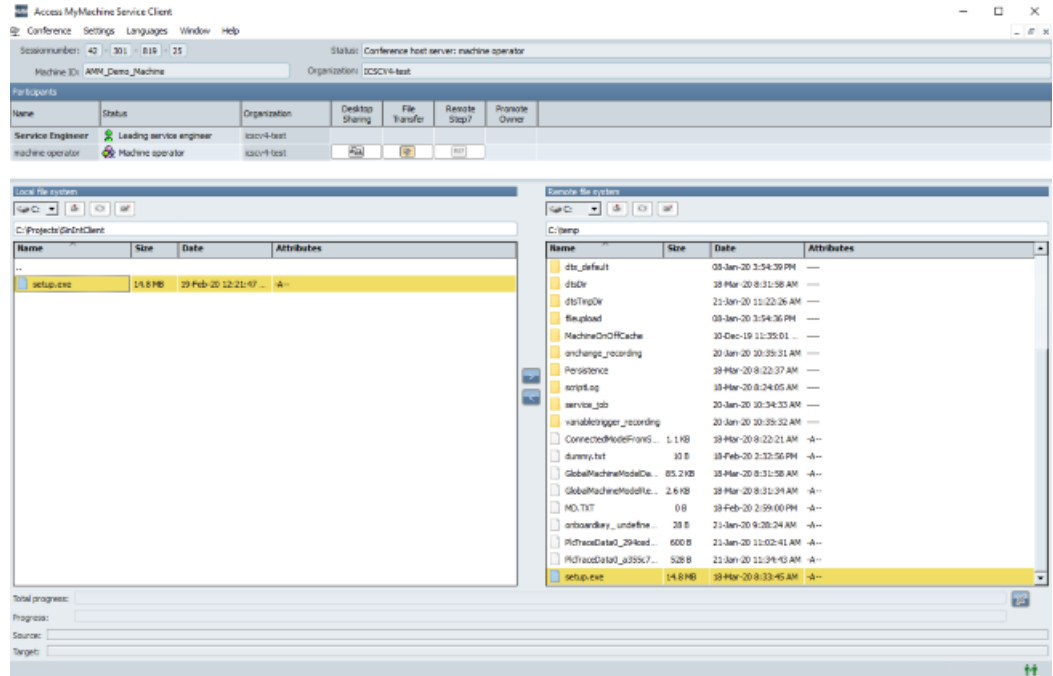
The SINUMERIK Integrate client from the SINUMERIK Integrate package is directly copied to the target directory on the SINUMERIK control system.

1. In the local file system, navigate to the source directory, e.g.: C:\Projects\SinIntClient.
2. Select file "setup.exe".



## 3.4 SINUMERIK Integrate client update via remote access using AMM (Windows)

3. In the removed file system, navigate in the target directory: C:\temp.
4. Click on button ">", to transfer the file to the SINUMERIK control system. No other actions can be performed while the file is being copied. The operation is displayed on a progress indicator.



### Activating the SINUMERIK Integrate client

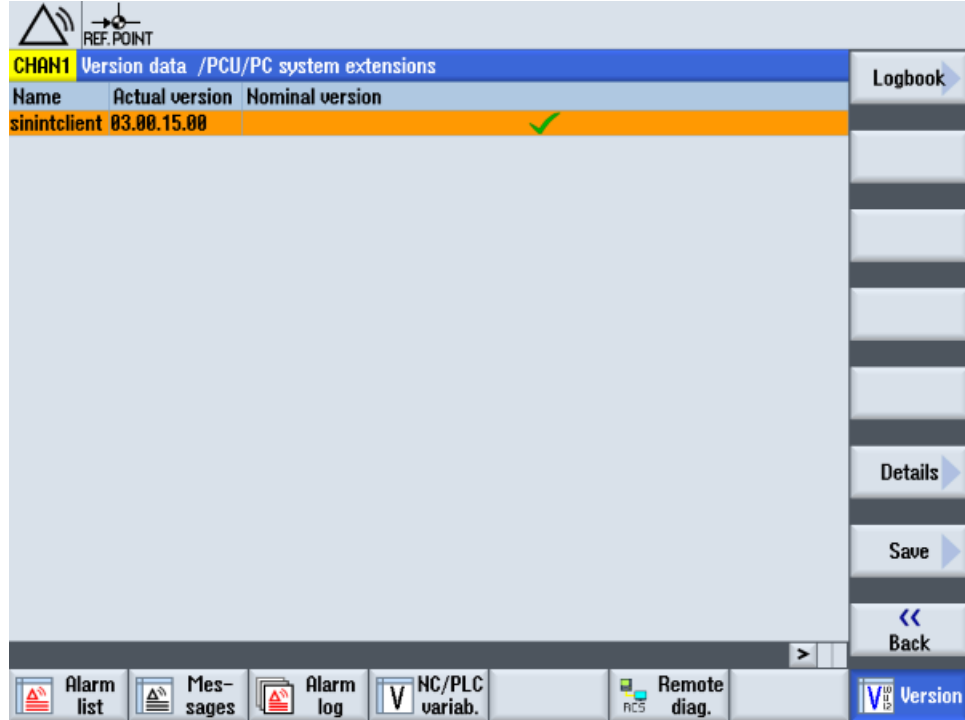
1. Exit the remote access at the SINUMERIK control system.
2. Update the SINUMERIK Integrate client.  
**Additional information** on the client update under Windows is available in Function Manual Manage MyMachines /Remote.
3. Perform a power on.

#### Note

It is not sufficient to just restart the HMI!

3.4 SINUMERIK Integrate client update via remote access using AMM (Windows)

- 4. Re-enter the remote session.
- 5. Open operating area Diagnostics.  
Check the SINUMERIK Integrate client version under "/Version/System extensions PCU/PC".



- OR -

Check the SINUMERIK Integrate client version in the file system.

Open file "version.xml" in directory: <installation path>\addon\sinumerik\hmi\sinintclient.

## 3.5 Installing Service Client Manage MyMachines /Remote under Windows XP

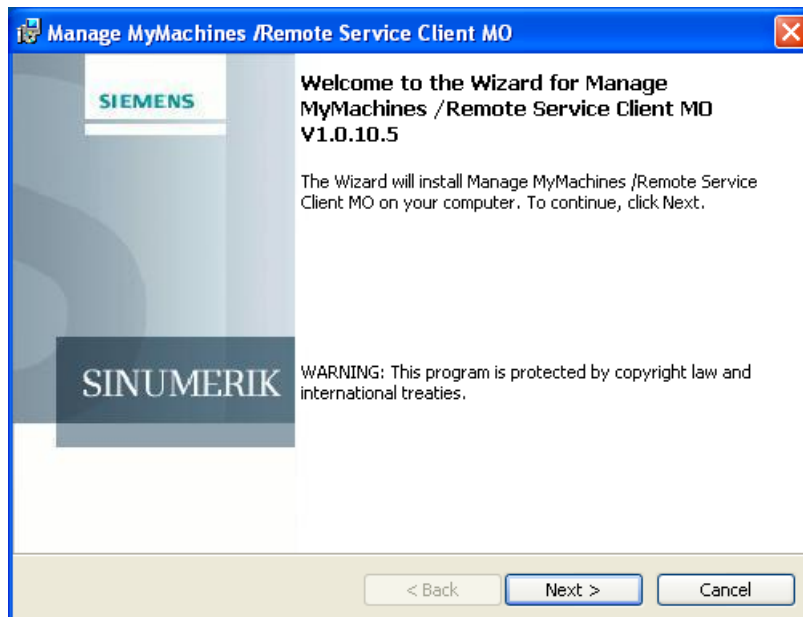
### Precondition

You have downloaded the following software from "Manage MyMachines /Remote", e.g. to a USB flash drive.

- Manage MyMachines /Remote Service Client for Machine Operators - PCU

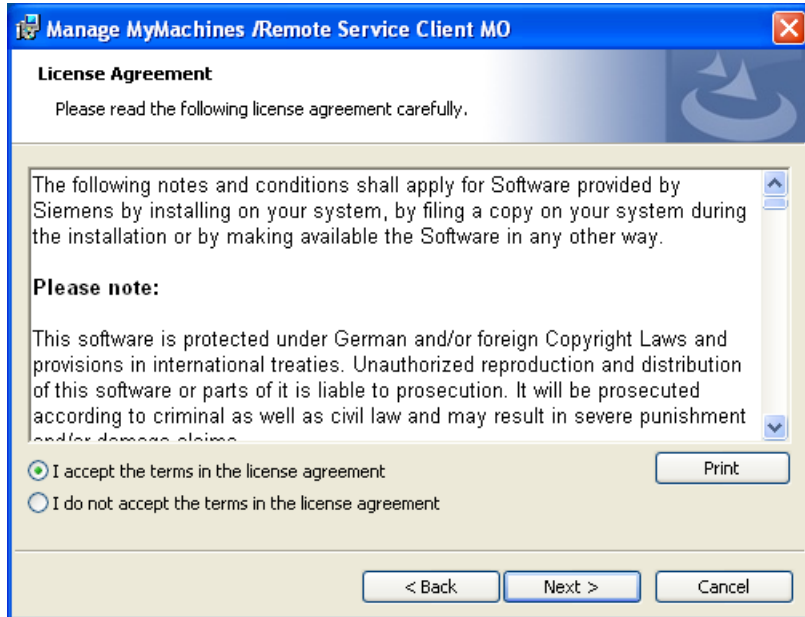
### Procedure

1. Place the software in the installation directory, e.g. under "F".
2. Start "setup.exe" with a double click.  
English is the installation language.
3. "Manage MyMachines /Remote Service Client MO - InstallShield Wizard" opens.
4. The welcome dialog box opens and shows the current version.  
Click "Next >" to prepare for installation.

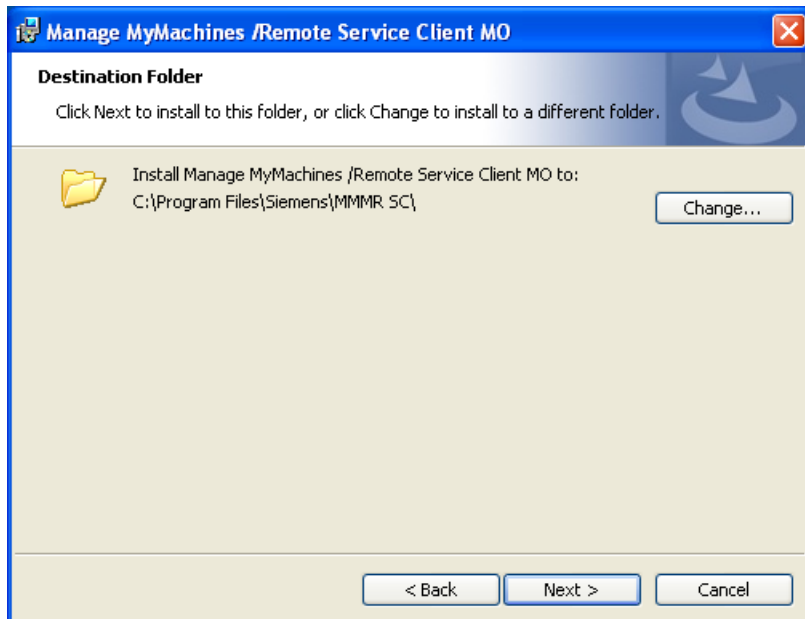


3.5 Installing Service Client Manage MyMachines /Remote under Windows XP

- 5. The "License Agreement" window opens.  
Read the license agreement.
  - Click "Print" if you want to print out the terms.
  - Activate option box "I accept the terms in the license agreement" and click on "Next >".

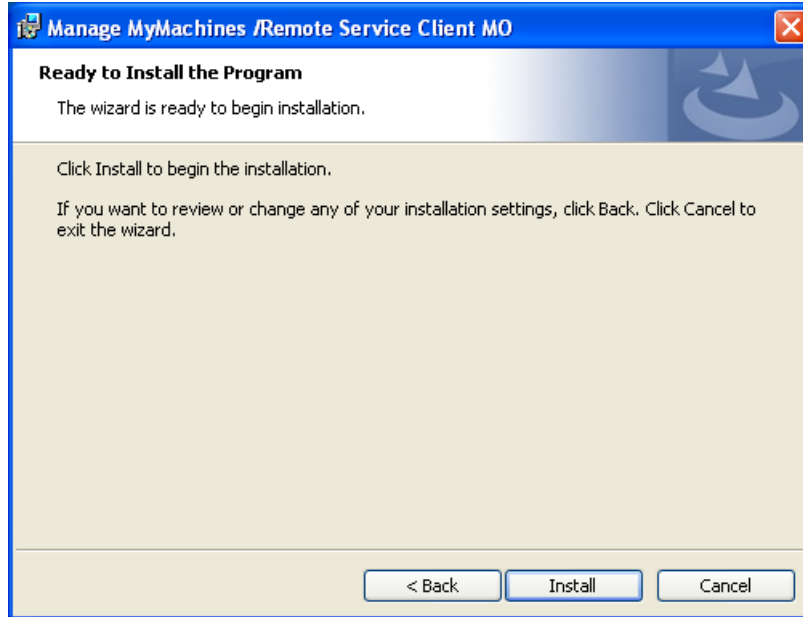


- 6. The "Destination Folder" window opens and the installation directory is displayed.  
Click "Next >".  
- OR -  
Click "Change..." to change the directory.

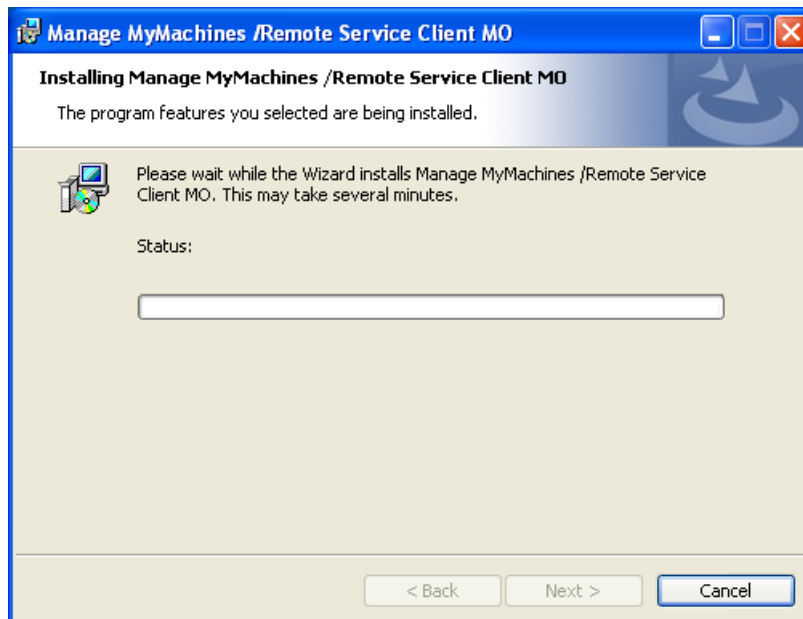


## 3.5 Installing Service Client Manage MyMachines /Remote under Windows XP

- The Wizard is ready to install the program.  
Click "Install" to start the installation.

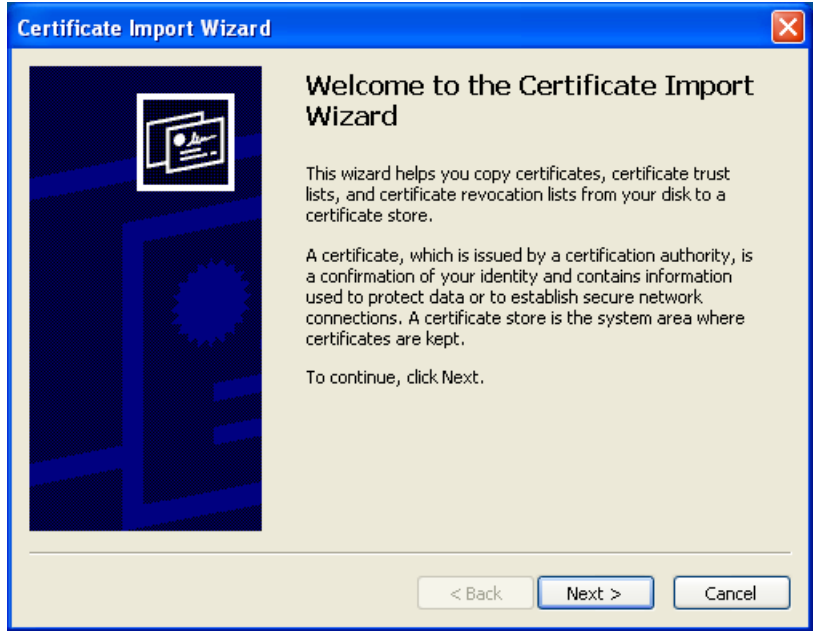


- The "Installing Manage MyMachines /Remote Service Client MO" window opens and displays the installation progress.

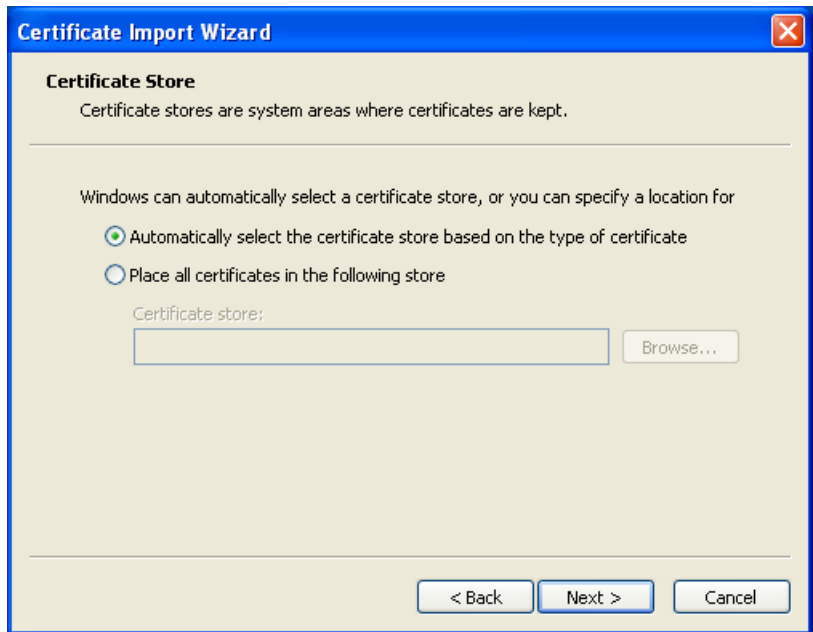


3.5 Installing Service Client Manage MyMachines /Remote under Windows XP

- 9. The "Welcome to the Certificate Export Wizard" window opens. Click "Next >" to start importing the certificates.  
- OR -  
If you click "< Back", you return to the previous window.

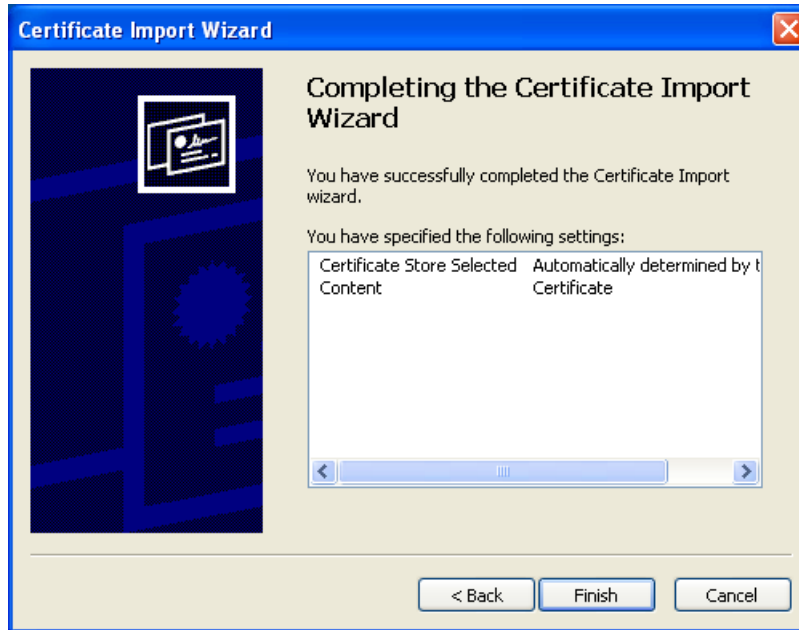


- 10. The "Certificate Store" window opens.
  - Select the check box "Automatically select the certificate store based on the type of certificate".
  - Click "Next >".



## 3.5 Installing Service Client Manage MyMachines /Remote under Windows XP

11. The "Completing the Certificate Import Wizard" window is opened.  
You see the selected settings.  
Click "Finish" to complete import of the certificates.



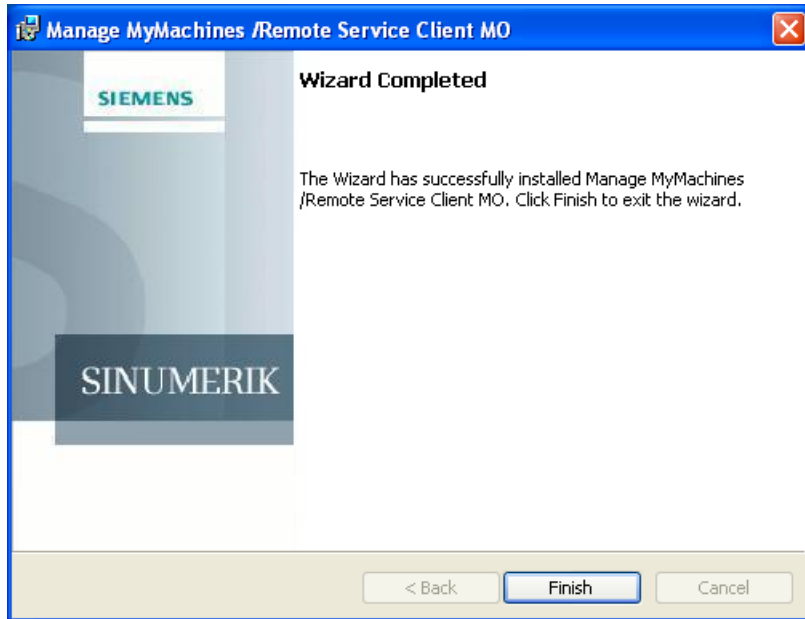
12. You receive a security warning.  
Click "Yes" to continue installing the certificates.

3.5 Installing Service Client Manage MyMachines /Remote under Windows XP

- 13. A message is displayed indicating that the certificate was successfully imported. Click "OK", to exit certificate import.



- 14. The "Wizard Completed" window opens. Click "Finish" to end installation.





## 3.6 Using the Service Client Manage MyMachines /Remote under Windows XP

Authorization software that enables you to use Manage MyMachines /Remote under Windows XP is available. Using this software, you authenticate a SINUMERIK control system with HMI-Advanced before you participate in a session with Manage MyMachines /Remote.

The program is a Windows .exe application that allows the authorization of older SINUMERIK control systems with the Windows XP operating system. Use the authorization software in addition to "Manage MyMachines /Remote Service Client".

### Standard configuration - before using for the first time

The authorization software opens an authorization page in your standard web browser.

---

#### Note

##### Web browser

- Use a web browser that communicates with MindSphere and the following functions of MindSphere.
  - Please note that communication may depend on the type of the operating system patches that are installed on the device.
  - Also note that the use of out-of-date browsers and operating systems require that special security mechanisms are implemented, for example firewalls that protect against external access. These measures are described e.g. in the application note and in standard security documentation provided by SIEMENS.
- 

If additional proxy settings are used for applications in MindSphere, then also apply these settings for the authorization software.

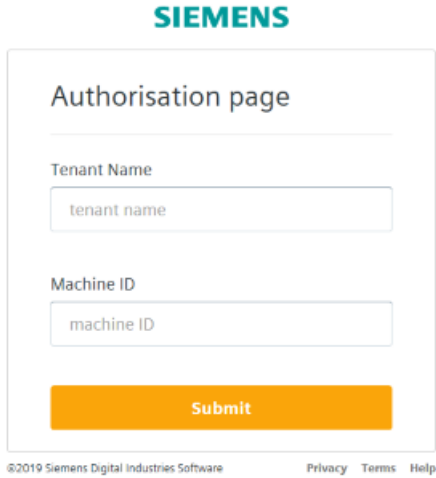
**Additional information** about proxy settings is provided in the Application examples, MindSphere Manage MyMachines /Remote - Installation in existing control system environments

### Procedure

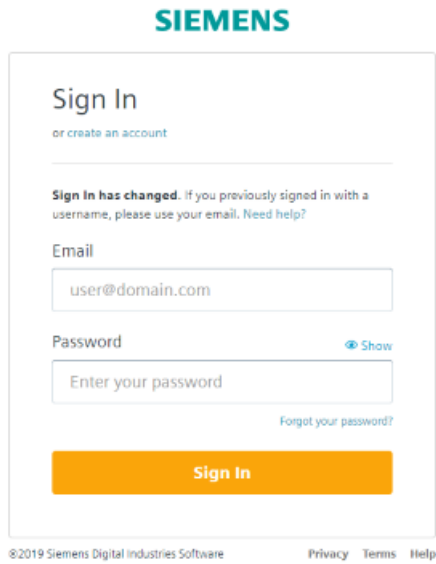
1. In the start menu, select: Start -> All programs -> SIEMENS -> SINUMERIK Integrate.
2. Click on "XP\_authorization".

3.6 Using the Service Client Manage MyMachines /Remote under Windows XP

- 3. Your browser is opened with the "Authorization page".
  - Enter the tenant names and the machine ID.
  - Click on "Submit".



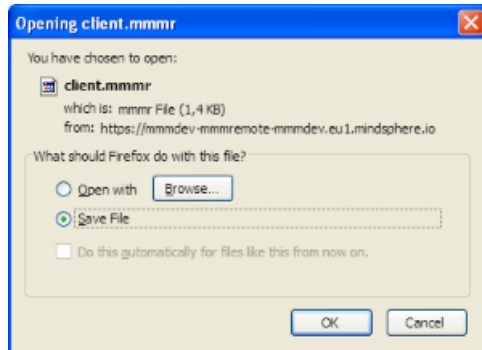
- 4. The "Sign In" window opens. Enter your MindSphere login:
  - Enter your email address and your password.
  - Click on "Sign In".



---

### 3.6 Using the Service Client Manage MyMachines /Remote under Windows XP

5. The standard window to download files opens.  
Click the "OK" button to save the client authorization file "client.mmmr". The file is automatically saved to the correct directory.



6. Start the "Manage MyMachines /Remote Service Client MO".  
You can participate in the session once the service engineer has initiated it.

#### **Error handling - backing up data for the login process**

The authorization software does not manage the session between users and MindSphere.

If you wish to backup login data, then you can do this in your web browser, e.g. using cookies.

---

#### **Note**

##### **Saving data in the browser**

It is possible that the web browser remembers data that you use to populate input fields.

Change the default data privacy settings if you do not wish to automatically enter data such as tenant name or machine ID.

---



# Appendix

## A.1 List of abbreviations

Admin	Administrator (user role)
AMM /C	Analyze MyMachine /Condition
CNC	Computerized Numerical Control:
COM	Communication
DIR	Directory:
FAQ	Frequently Asked Questions
h	Hour
HTTP	Hypertext Transfer Protocol
HTTPS	HyperText Transfer Protocol Secure,
IB	Commissioning engineer (user role)
ID	Identification number
IE	Internet Explorer
IFC	Interface Client
IoT	Internet of Things
IPC	Industrial PC
MB	Megabyte
MFA	Multi Factor Authentication
MLFB	Machine-Readable Product Code
MMM	Manage MyMachines
MMM /R	Manage MyMachines /Remote
MO	Machine operator
MSTT	Machine control panel
NC	Numerical Control: Numerical control
NCU	Numerical Control Unit: NC hardware unit
OEM	Original Equipment Manufacturer
OP	Operation Panel: Operating equipment
PC	Personal Computer
PCU	PC Unit: Computer unit
PLC	Programmable Logic Control: Programmable Logic Controller
SE	Service engineer
SI	SINUMERIK Integrate
SK	Softkey
SW	Software
URL	Uniform Resource Locator, einheitlicher Ressourcenzeiger
UTC	Universal Time Coordinated, coordinated global time
VNC	Virtual Network Computing

